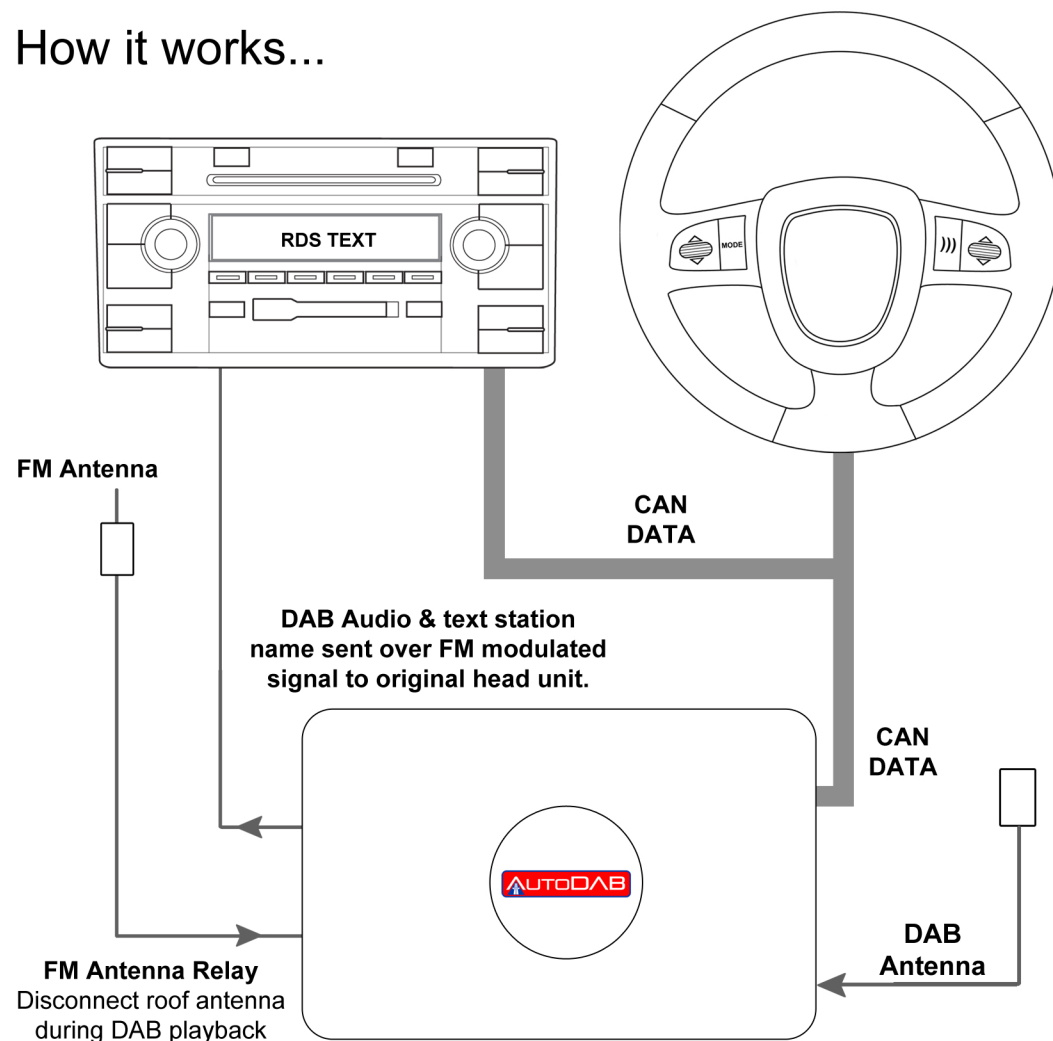




How it works...



Full fitting instructions and user manuals are available to download from the AutoDAB website

AutoDAB is a Brand of Connects2 Ltd.



...digital radio on the move



Hyundai AutoDAB Interface

DAB-HY4

www.AUTODAB.COM

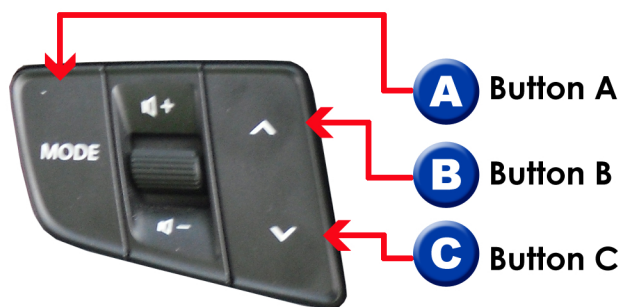
| | |
|----------|-------|
| i40 | 2011> |
| Santa Fe | 2011> |
| ix35 | 2010> |

Vehicles without OEM
Satellite Navigation

Designed and Engineered in the UK

Getting Started...

1



Notes

Volume control buttons work as per usual.

Step 2 - This step may already have been done by your installer. If this is the case move straight to Step 3 - 'Browsing through preset stations'

2

Getting Started - Initial setup of head unit

On first install the AutoDAB controller will default to transmitting on 87.8MHz. Tune the car radio to this frequency.

The car radio will display 'AutoDAB' and the audio message 'Scanning AutoDAB, please wait' will be heard.

The audio message repeats every 5 seconds.

Choose a preset on the car radio and store the AutoDAB frequency to it.

After initial scanning is complete the audio message will change to "AutoDAB"

Press & hold **A** to start AutoDAB.

After a short delay the car radio will display the first available DAB station found **e.g. Absolute**

Please note that in order to change the source i.e FM, CD, Aux, AutoDAB must be turned off by pushing button **A once whilst in normal DAB mode.**

3

Browsing through Preset Stations

Your AutoDAB will come with 7 Presets already loaded. To browse through your presets you will need to use the following commands:

- ➡ Press button **B** to move up the Preset list.
- ➡ Press button **C** to move down the Preset list.

9 Set Voice Volume

The voice prompt can be increased by pressing button **B** and decreased by pressing button **C**. The voice volume level is displayed as a figure between 01 and 10 max.

10 Set Frequency

Allows the user to adjust the FM frequency which the AutoDAB broadcasts on. The default frequency is 87.8Mhz.

11 Disp AutoDAB

Turn on/off the 'AutoDAB' RDS name displayed when selected FM frequency is stored in the head units preset memory.

12 Set Browse

AutoDAB can be navigated in either List mode (all available stations listed alphabetically A to Z) or in Ensemble mode (all stations listed by ensemble i.e a group of stations that are transmitted together).

13 Scroll

Enables or disables scrolling text. The radio text can be set to scroll on the display where you would normally see your DAB station. The display will show what you're listening to and whatever text the station transmits. This can, however, be difficult to read on some radios and be distracting to drivers. We, therefore, recommend that this feature is disabled.

14 Diagnostics

Diagnostics Menu for use if a problem occurs with your AutoDAB.

15 Factory Reset

Restore AutoDAB tuner to factory settings. All presets/ stations will be deleted and AutoDAB will be reset to its original configuration.

16 Exit

Exits the DAB menu and returns to normal AutoDAB mode

Menu Tree Key

1 AutoDAB

Normal DAB mode. DAB Station name is shown on head unit display.

2 Menu

Enter AutoDAB menu

3 Add/Del Presets

If the current tuned station is already in the AutoDAB preset list the option of Delete Preset will be offered to the user, if the current tuned station is not already in the AutoDAB preset list the option of Add Preset will be offered. (see adding presets)

4 Scan

AutoDAB will scan for all available stations in your area and up-date the station list accordingly. The display will show 'scanning' and you will be prompted "scanning AutoDAB please wait..." twice. After scanning is completed your display will tell you how many stations were found and how many are available for you to select.

5 Clear and Scan

Deletes existing station list and re-scans. All stations and presets that are no longer in range will be deleted.

6 Reset All Presets

Deletes all presets and restores them to the factory default.

7 System Menu

Allows access to the system menu of the AutoDAB.

8 Exit

Exits the AutoDAB menu and returns to normal DAB mode.

4 Navigating the station list (Alphabetical)

Press & hold **B** to move up or down the station list from the current tuned station. This will initiate station list navigation and temporarily change the action of button **B** & **C**. Now a quick press of button **B** or **C** will move up or down the full station list. After 30 seconds of no button pushes a double beep will be heard and buttons **B** & **C** will revert back to normal operation.

Tip - If you are looking for a specific station, then go to the preset nearest to it in the alphabet and move up or down from there.

5 Adding new Presets

When you locate a station that you want to add to your presets whilst navigating stations (see step 4). Simply press and hold **A** which will give you access to the AutoDAB menu. Press **B** once. The text will show add-pre as you will hear the audio prompt add preset. Press button **A** once and the preset will be added.

Continue to navigate the list to add other presets as required.

6 Scanning for Stations

To update the available stations in your current location

1. Press & hold **A** to enter the DAB menu
2. Scroll to the "Scan" option using **B** or **C**
3. Press **A** to start the scanning operation.

The audio message repeats twice.

After a delay, typically 60 seconds, the car radio will display the total number of DAB stations found and the number of DAB stations currently available.

e.g. 63 stations have been found.
53 stations are available.

Note Found stations are all the stations that have been found in all scanned areas. Available stations are the stations that have been found in this scanned area.

After a short delay the car radio will display the DAB station name, **e.g. Absolute**

