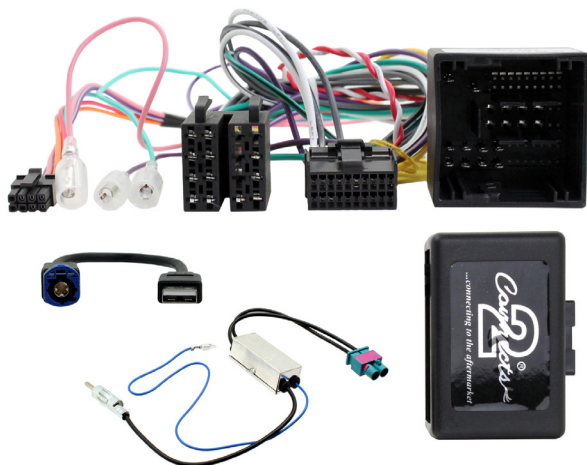




...connecting to the aftermarket

CTSCT012.2

Citroen Steering Wheel Control Interface



Application:
Dispatch 2016>
Spacetourer 2016>

www.connects2.com

**Designed and
Engineered
in the UK.**



CTSPG019.2

Steering wheel control interface for Citroen vehicles. Designed for vehicles with original touch screen and rear parking sensors only. Retains parking sensors and steering wheel controls. NB: This interface doesn't support the following: Stop & start on & off function , parking sensors On/Off Function. Vehicle Diagnostics menu, vehicle settings ie headlights : welcome lights , follow me home , security : drivers attention warning , language, date and time settings

Product Contents

- 1. Interface
- 2. Harness
- 3. Instruction

Prior to installation

Read the manual prior to installation. Technical knowledge is necessary for installation. The place of installation must be free of moisture and away from heat sources. Please ensure you use the correct tools to avoid damage to the vehicle or product.

Connects2 can not be held responsible for the installation of this product.

Wiring Colour Codes

| Wire Colour | Function |
|--------------|---------------|
| Yellow | Permanent 12V |
| Black | Ground |
| Red | 12V Ignition |
| Orange | Illumination |
| Pink | Speed Pulse |
| Green | Park Brake |
| Purple/White | Reverse |
| | |

| Wire Colour | Function |
|--------------|-----------------------|
| Purple | Right Rear Speaker + |
| Purple/Black | Right Rear Speaker - |
| Green | Left Rear Speaker + |
| Green/Black | Left Rear Speaker - |
| Grey | Right Front Speaker + |
| Grey/Black | Right Front Speaker - |
| White | Left Front Speaker + |
| White/Black | Left Front Speaker - |

Technical Support

Connects2 want to provide a fast and suitable resolution should you encounter any technical issues. With this in mind, when contacting Connects2, try to provide as much Information as possible. This will speed up the process and help us to help you.

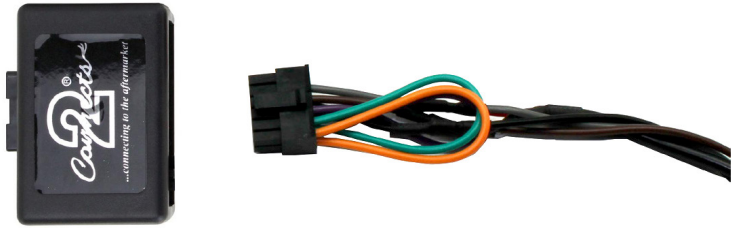
Please use our dedicated online technical support centre: support.connects2.com



Subscribe to our YouTube Channel for installation guides and tips... www.youtube.com/connects2

FITTING GUIDE

1. Remove and disconnect the original head unit.
2. Connect the 12 way molex connector of the head unit patch lead (supplied separately) to the interface.



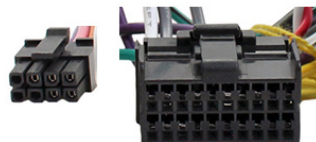
3. Connect the opposite end of head unit patch lead to the head unit steering wheel control input on the back of the aftermarket head unit. This may be a 3.5mm jack plug or a wire input depending upon the head unit brand being fitted.

Please see the head unit installation manual for further information on where to connect.

Important Note: This step must be completed before connecting power to the interface. Failure to so do may result in no steering wheel control function.

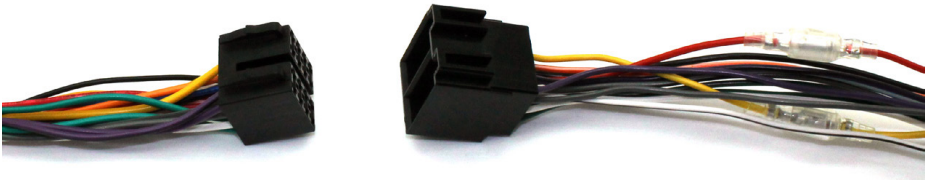


4. Connect the two connectors (pictured, right) to the interface box



FITTING GUIDE

5. Connect the male power/speaker ISO harness to the female power/speaker ISO harness from the aftermarket head unit. For aftermarket head units without an ISO connector, please refer to the wiring colours on Pg. 2.



6. Connect the female vehicle specific connector to the male vehicle connector.

7. Make the connections from the parking sensor retention lead to the head unit's USB port and vehicle's pre-existing LVDS connector.

8. Make the connections from the antenna adapter to the back of the head unit and the vehicle's original antenna connection. Test head unit for correct operation.

STEERING WHEEL CONTROL FUNCTIONS

