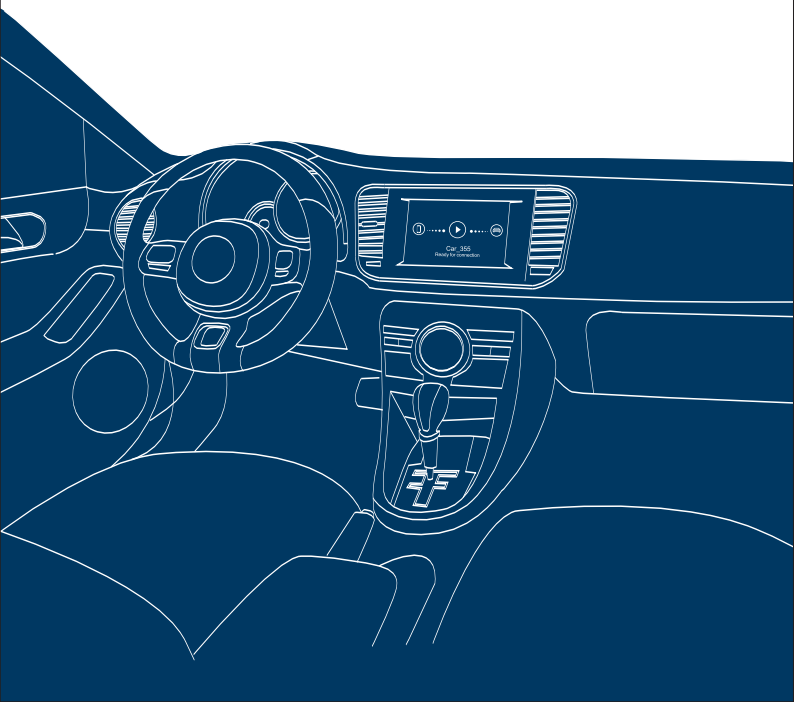


# MANUAL



## ► Features

Machine is advanced high-tech product which designed for high-end mobile and portable devices. It makes your mobile phone act as the "brain" of your car by combining smart phone with car.

It supports phone which has WIFI Miracast or Airplay Mirroring protocol or other DLNA-equipped devices to wireless mirror phone screen to car video player. For this wireless connection, your phone's screen can be mirrored to the car video player in real-time and provide navigation , play-audio, entertainment and so on.

In addition, you can share anything in your phone such as photos, music, video, etc. with family or friends by forwarding them from your smart phone to car video player.

## ► Product components



## Connection description



Note:plug the phone date cable with the USB port then can mirror the screen directly without connect the Wi-Fi first.

Pic 1

## ► How to link

### Connect by AV cable

#### 1.AV port is in the armrest box.

- Plug the AV connector in the same color port
- Plug USB to get power supply if there has USB port in your car. If not, you can connect to cigarette lighter to get power.

Clinking corresponding signal input AV/TV / External input / Auxiliary input on the car video displayer (shows as Pic1), then it will enter a interface as Pic2. It means product can work normally.

## 2.AV port is behind the car video player

Take out the car video player to check the interface diagram . Then find out Video IN, Left Line IN and Right Line IN. Finally find out the ACC and GND , it can be screen power supply or car power supply.

- Plug the AV connector in the same color port
- Connect the product's ACC cable to the car ACC and GND cable to the car GND.
- The installation of antenna will effect the fluency for playing. It can be pasted on the front of car or AB plastic board.

Clinking corresponding signal input AV/TV / External input / Auxiliary input on the car video displayer , then it will enter a interface as Pic2. Means it can work normally.

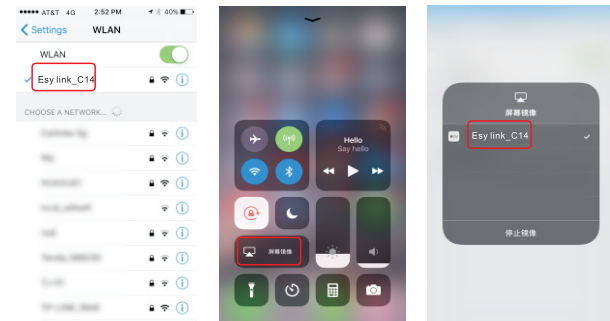
## Connect by HDMI cable

- Connect the HDMI cable to the car HDMI port
- Plug USB to get power supply if there has USB port in your car. If not, you can connect cigarette lighter to get power.

\* This picture represents a screen display has been properly connected



Pic 1



## ► Android System

Taking Nexus4 Android 4.2 for example to show you how Android connect to device

- Setting -- Display -- Wireless display -- clink on Machine WIFI
- Waiting for several seconds with patience, then phone screen can be found n the car video player screen. Shows as pictures below

Note: It is no need to connect device WIFI if you use WLAN on Android phone.

As show above is native Android system. Different phone may have different setting way because Miracast was named differently by phone suppliers. Here are some setting way for examples

Samsung: Setting -- Screen Mirroring/Smart view

Allshare cast

Coolpad: Setting -- Display and brightness -- Display

SONY: Setting -- Xperia Connections -- Screen mirror

Setting -- Display -- Screen mirror

HTC: Setting -- Media output

Xiaomi: Setting -- WLAN --WLAN display

Setting -- More connection -- WIFI display

Nexus: Setting-Display-Wireless display

OPPO: Setting -- More wireless connection -- WLAN display

## ► Online Upgrade

- Connected to WIFI
  - Search IP NEW IP on browser
  - Choose Online upgrade and it will upgrade automatically
- Note: Please do not interrupt power supply or restart when it upgrad

## ► How to Change Into 5G Mode (Dual band machine)

- Connect phone to device
  - Search 192.168.59.254/remote/remote.html on browser
  - Choose icon(setting icon)
  - operate on the car video player screen
- Network -- Virtual AP Setup -- Radio Band -- 5G Preferred -- OK -- Save Change
- Indicator 5G can be found on lower left when it start up next time.Tips.Some Versions also tap the Mode button to switch the channels

## ► Setting connect to WIFI

It will make no difference for Android phone to use 3G/4G/WIFI and iPhone to use 3G/4G when it displaying. If you would like use WIFI in iPhone, you can refer as below.

- Connect phone to devices WIFI
- Search IP 192.168.59.254 on browser
- Successfully enter and choose icon
- Clink WIFI Connection and scan WIFI
- Choose WIFI which you would like you connect and fill in password.
- WIFI icon and New IP can be found on the lowest left of car screen.

