



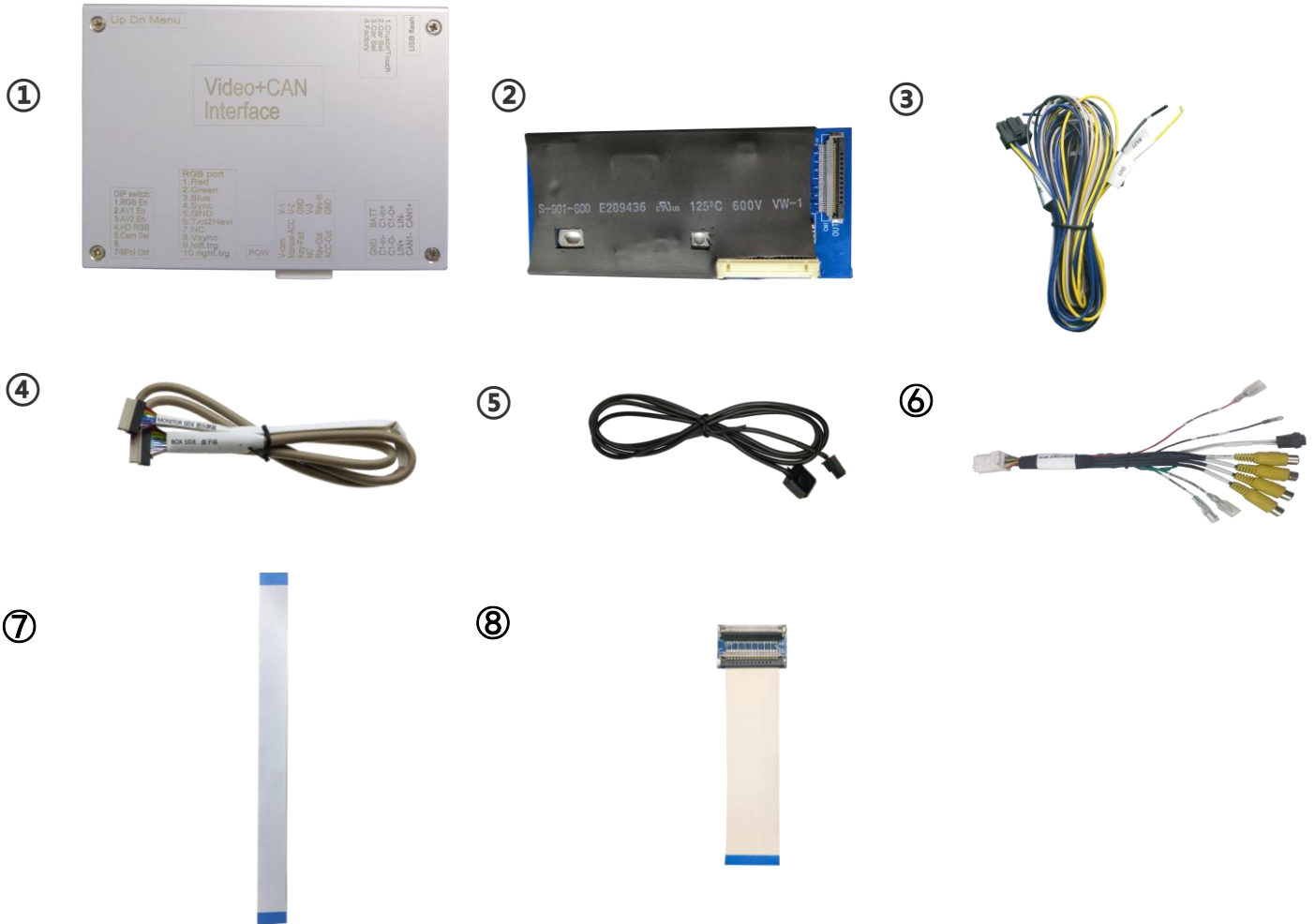
The interface can offer: Reverse camera insertion, several other videos like 2D/3D-360 surround view、night view、DVR 、phone mirror link 、and support maxim 4 video inputs.

Suitable cars: fits 2019 IVECO with 7inch Monitor.

Features

- One simple daughter PCB insertion, it works also when the external box is not connected.
- This total unit can be manually powered on by ACC 【BATT and Manual ACC connected to cigarette lighter, thus would be no current leakage at all.
- The front video can be easily enabled by short press on the keypad. A hold or long press will make the inputs switched to other video sources.]
- A “Reverse-in” trigger wire to manually switch to the Rev-In video.
- The high quality image processor has the advantages of stable and low power consumption. All the components are automotive specific and work stably in the range of -40~+85°C.

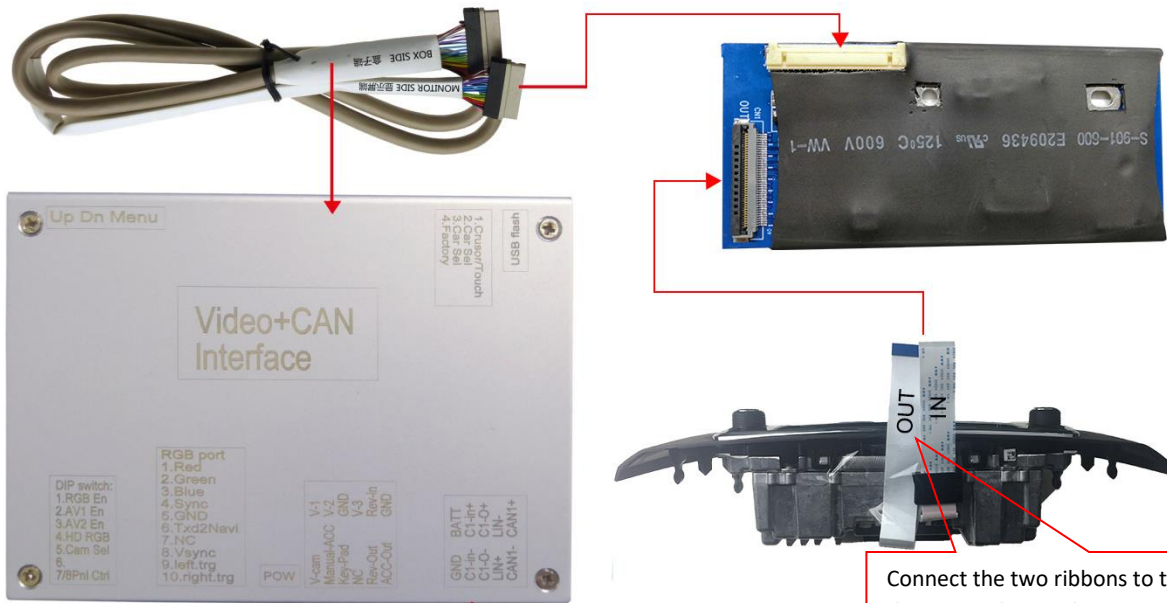
Accessories



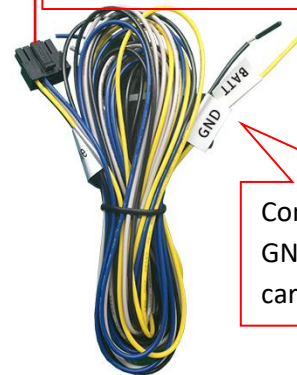
What's in the Package					
No.	Name	Qty	No.	Name	Qty
1	Interface box	1	5	External switch	1
2	External PCB	1	6	4 Video RCA Cable	1
3	CAN-Harness	1	7	0.5*40*200A ribbon	2
4	LVDS Cable	1	8	0.5*40*80A ribbon 0.5*40Pin board	2

Note: spare parts 7 and 8 are equipped with one more set than the actual installation.

Connections



Connect the two ribbons to the two sockets on the external PCB. The external PCB sockets are signed OUT and IN. Connect the ribbon IN to the socket IN and ribbon OUT to socket OUT (the ribbon connected to the 40pin external PCB is IN). The PCB installation will show how to connect the ribbons and boards.



Connect BATT and GND to the original car.

Connect the purple wire "Manual ACC" to the car ACC.

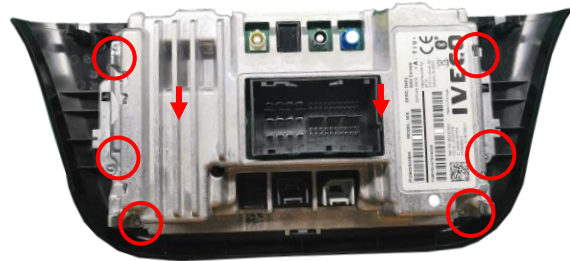
Reverse-IN should be connected to reversing light

Small buttons to switch video by long or short press

Installation Procedure



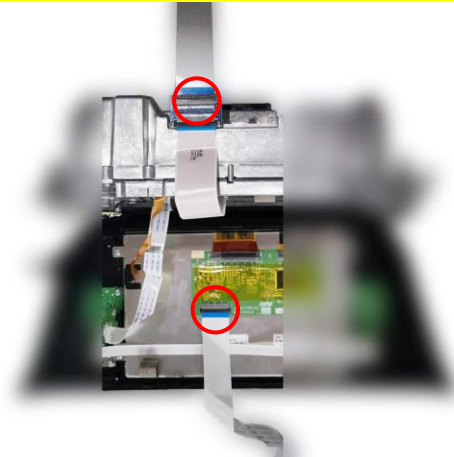
1、IVECO 7inch Monitor HU and one external PCB, one LVDS Cable.



2、Remove screws, then the rear can be opened.



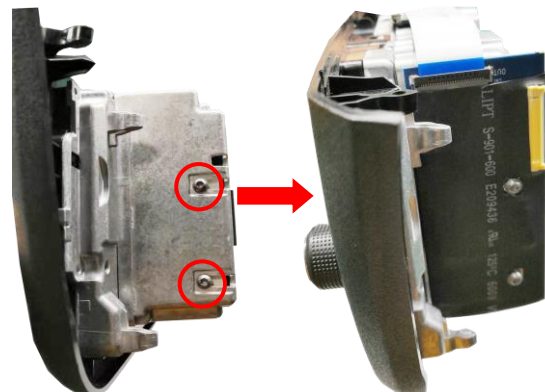
3、Pay attention to take the OEM ribbon from the Monitor as the above picture shows.



4、Put the OEM ribbon to the external PCB and connect interface's 200mm ribbon connect to OE socket .




5、Extend the two ribbon from the Head Unit gap, fix the ribbon to the Head Unit by tape.




6、Remove the screws and put our external PCB on the HU, then fix the external PCB by the screws as the above picture shows.

DIP Setting

1) DIP-4 Setting

DIP up=off DIP down=on			
DIP	on	off	default
1/2/3	No function		off
4	=Down for USB update, otherwise =UP.		

2) DIP-8 Setting

DIP up=off DIP down=on			
DIP	on	off	default
1	Front camera =ON	Front camera = OFF	off
2	AV1 =ON	AV1=OFF	on
3	AV2 =ON	AV2=OFF	on
4	/	/	off
5	Rear camera installed, when REVERSE-IN=12V, inserted camera picture will be displayed.	OE rear camera installed. when REVERSE-IN=12V, OEM picture will be displayed.	on
6/7/8	/	/	off

Note

A. Add video after switching through the external small button.

Short press: image shows OEM → then front camera → then OEM.

Long press [Hold]: image shows OEM → image shows AV1 → image shows AV2 → image shows OEM (when AV1\AV2 is fully open)

Such as:

1) when dialing 1 is closed, short press cannot switch forward view. Only when dialing 1 is open can it be switched.

2) DIP2=OFF: Long press the small button can image shows OEM → image shows AV2→ image shows OEM.

3) DIP3=OFF: Long press the small button can image shows OEM → image shows AV1→image shows OEM.

B. The green line "REVERSE IN" on the video line can be connected with the reversing light line to switch the reversing image.

Parameters

#	Name	Parameters
1	Video input amplitude	0.7Vpp ,75 Ω
2	Sync amplitude	3~5Vpp,5K, negative pulse
3	Reverse-out:	12V,3A[max]
4	Reverse-IN:	threshold: 3V
5	Av1 , cam video amplitude.	0.7Vpp,75 Ω
6	Av1 , cam format	NTSC/PAL/SECAM automatic
7	Power consumption	3.6W [0.3A @12V]
8	Standby current	< 10uA
9		
10	Temperature	-40 ~ +85C
11	size	15.22cm * 9cm * 2.1cm