



1.Fitted cars

Fits Fiat Ducato8 with all-in-one head-unit R1LOW by Mitsubishi

This interface can support: reverse camera, 4 av-inputs etc.



Features

1. One simple daughter PCB insertion, it works also when the external box is not connected.
2. This total unit can be manually powered on by ACC [BATT and Manual ACC connected to cigarette lighter, thus would be no current leakage at all].
3. The front video can be easily enabled by short press on the keypad. [An hold or long press will make the inputs switched to other video sources.]
4. A "Reverse-in" trigger wire to manually switch to the Rev-In video.

2. Accessories

①



②



③



④



⑤



⑥



⑦

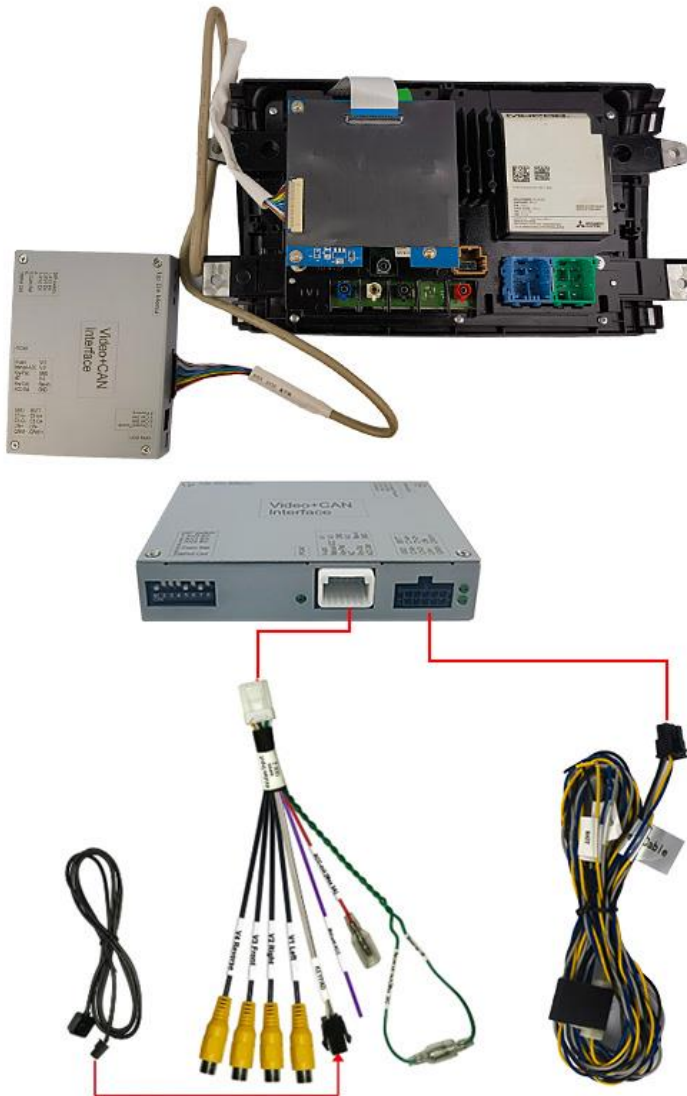


⑧



What's in the Package					
No.	Name	Qty	No.	Name	Qty
1	Interface Box	1	6	4 Video RCA Cable	1
2	Internal PCB Board	1	7	External Switch keypad	1
3	External PCB Board with LVDS cable	1			
4	Power CAN- Harness(optional)	1	8	Φ 3*28mm copper pole	4
5	Power harness	1		Φ 2.5*6mm/ Φ 3*6mm screw	3

3.Connections



Internal PCB should be inserted inside the monitor, and external PCB board should be fixed on the rear cover of the monitor.

Connect the Reverse trigger wire to the Reverse-IN

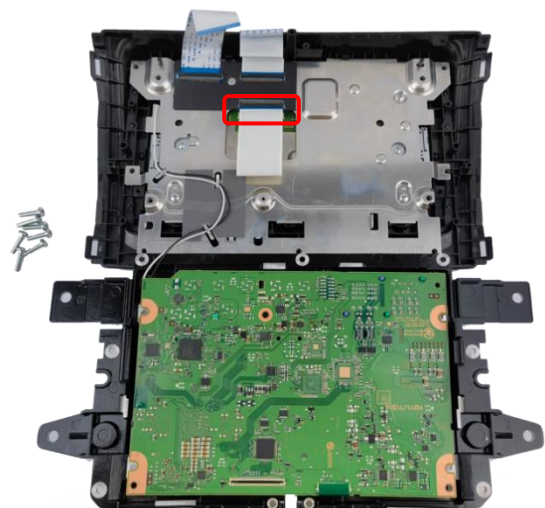
4. Daughter PCB installation



1、 Remove the screws on the rear cover.



2、 Take down the rear cover.



3. The oem ribbon should be connected to our internal converter board .



4. and connect our ribbon to the connector of the OEM.




5. Fix the rear cover and be careful the ribbon

6. Connect the ribbon to our external PCB board and use the copper which can support to fix our external PCB board

5. Dip settings

8-DIP setting

Dip UP=OFF DOWN=ON			
DIP	ON	OFF	
1	FRONT CAM enabled	FRONT CAM disabled	OFF
2	AV1 enabled	AV1 disabled	ON
3	AV2 enabled	AV2 disabled	ON
4	Set OFF		OFF
5	After-market camera	Factory camera	ON
6	Set OFF		OFF
7	Set ON		ON
8	Set OFF		OFF

6 Specifications

#	Name	Parameter
1	Video input amplitude	0.7Vpp ,75 Ω
2	Sync amplitude	3~5Vpp,5K, negative pulse
3	Reverse-out:	12V, 1A[max]
4	Reverse-IN:	3V-16V
5	Av1 , cam video amplitude.	0.7Vpp,75 Ω
6	Av1 , cam format	NTSC/PAL/SECAM automatic
7	Power consumption	3.6W [0.3A @12V]
8	Standby current	< 10uA
9	RGB input format	RGB+ HV sync, VGA format, 720P resolution
10	Temperature	-40 ~ +85C
11	size	15.22cm * 9cm * 2.1cm